

GINETTA

Technical Bulletin

Product:	G40		
Date:	28/03/2019		
Circulation List:	All G40 Variants		
Bulletin Number:	TB0008 – G40 – Side Louvre trim detail		
Issued By:	Oscar Miller	Position:	Support Engineer

Action Status: (Tick relevant box)	<input checked="" type="checkbox"/>	Requires Immediate Action
	<input type="checkbox"/>	Action is advised but not essential/ necessary for all car variants
	<input type="checkbox"/>	For Information
	<input type="checkbox"/>	

Details:

To further improve reliability across the G40 Race range, Ginetta have added a small mesh detail to the main body shell. This detail is to extract hot air from the engine bay and improve the flow of clean/fresh air in this area. This mesh has been present on various models in the past, however going forward the decision was made to standardise all cars with left hand vents as the exhaust sits on this side

For consistency Ginetta have developed a template for you to trim the necessary detail in the shell. Once trimmed a mesh grill should be bonded on the inside of the shell. In order to upgrade your car please contact our parts department and ask for the following part numbers:

Part Number	Part Description	Quantity
G40-B0439	Side Louvre Mesh	1
G40-T0089	G40 Side Vent Paper Template	1



GINETTA

Technical Bulletin

Fitting Guide:

1. Print off the trim template, ensuring the print is 1:1 (Note this A3)
 - a. Measure the reference dimensions provided to double check scale.
2. Cut out slot profile from template and position on car with masking tape.
3. Double check reference measurements once positioned on car.
 - a. Start with the 91mm reference to the door shut line
 - b. Align template so its parallel to body shell and check 34mm references
 - c. These measurements are for reference only, tolerance is +/- 5mm
4. Mark body shell with template profile
5. Trim hole
6. Abrade inside surface in preparation for bonding
7. Deburr and clean the area
8. Bond G40-B0439 onto inside surface of body shell with Sikaflex (or similar)



GINETTA

Technical Bulletin

For further information contact:

Parts Department:

Tel :-0113 385 4164

Email :- parts@ginetta.com

Technical Support:

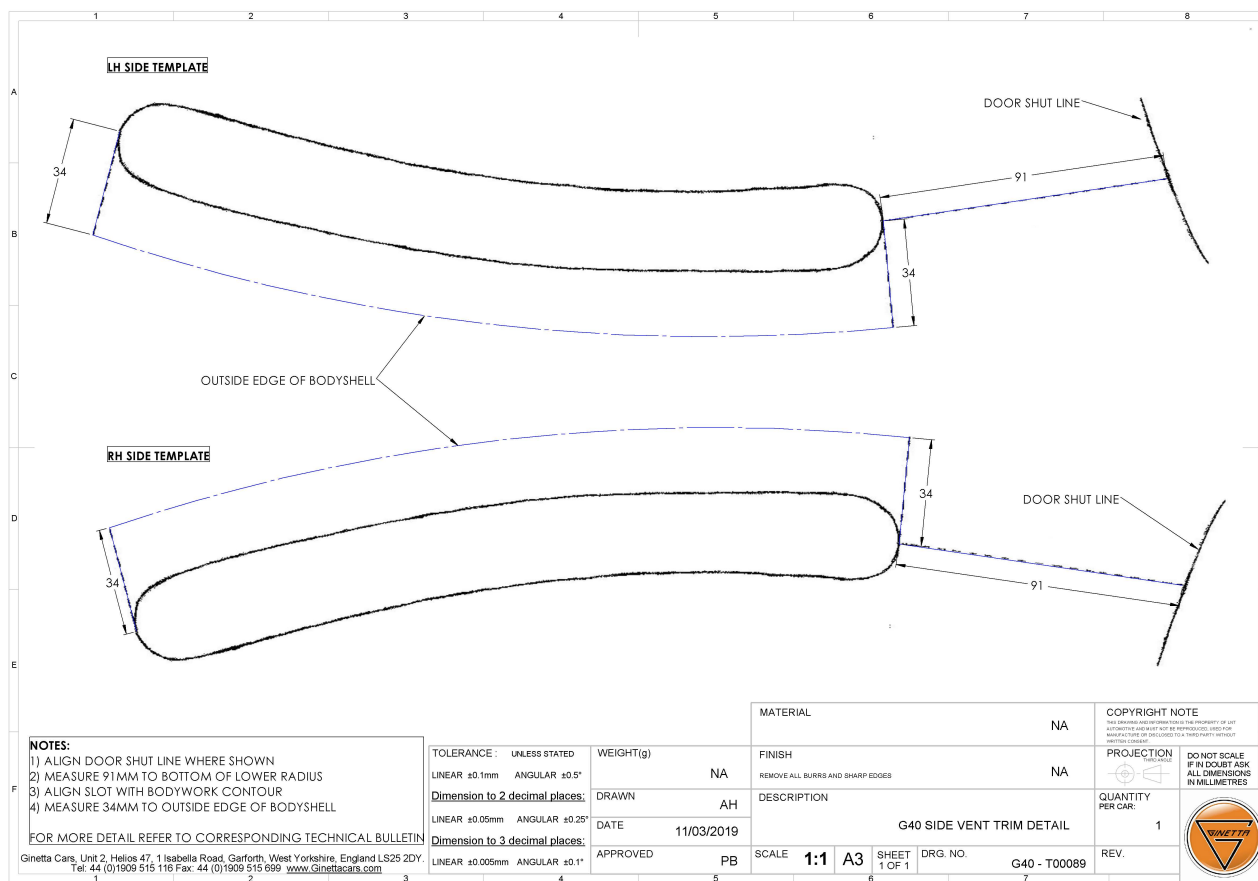
Oscar Miller

Tel :- 0113 385 4188

Mobile:- 07808 185977

Email :- oscar.miller@ginetta.com

Prepared by:	Ashley Higham	Signed:	AH
Approved by:	Peter Smith	Signed:	PS



DATE/0000 120704